

2 PAVED
AREA 2


ENCLOSED
BASEMENT 0000


Season's
Art



LANDSCAPE
DESIGN

Established 1976



ver the past 30 years I've had the pleasure of working in the everchanging beauty of the natural world. In Nature's timetable 30 years is relatively short, a moment in which to glimpse at how nature's forces change and sustain our environment. Time is an important element in landscape art, changing one's perceptions even from second to second.

Pictured on the following pages are projects along with quotes from some of those whose words I've used for guidance and inspiration. The pictures show the solutions to the design challenges put before me. These solutions developed from studying the character of the site and understanding the needs and desires of the client. The pictures show only moments in the lives of these projects. We look for each landscape to mellow with age, blend with the indigenous landscape and become a timeless place of beauty for those who entrust us to be the designers and stewards of their environments.

Tim Hill ASLA



ZIMMERMAN RESIDENCE
Orwigsburg, PA

*A*n *Acer palmatum*

'Ever Red' planted with dwarf Fothergilla, Hosta, Vinca and ferns, provides a focal point underneath a canopy of Red Oaks. The mounded Japanese Maple 'comes alive' at night when illuminated by the well light beneath its branches.

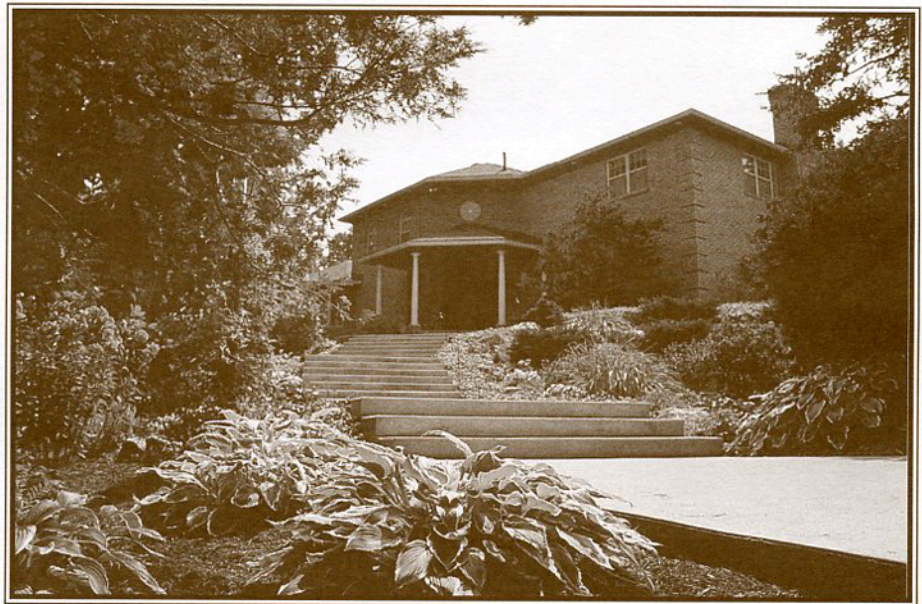
“Plants, like human beings have their own individuality. Some plants, to be at their best, need association in a small colony or group; others love the company of multitudes, forming a carpet on the forest floor or in the open. Some speak more forcefully alone.”

— Jens Jensen

*T*his grand stairway with low risers and deep treads leads from the street to the front door. Some of the mature trees and shrubs - Catalpa, Spruce and Yew - that once surrounded a previous house on the site are on both sides of the stairway. New plantings have been combined with these older specimens to complete the design.

“The psychology of arrival is more important than you think. If it is not obvious where to park, if there is no room to park when you get there, if you stumble into the back door looking for the front entrance, or if the entrance is badly lighted, you will have subjected your guests to a series of annoyances which will linger long in their subconscious. No matter how warm your hearth or how beautiful your view, the overall effect will be dimmed by these first irritations.”

— Thomas D. Church



MARTZ RESIDENCE
Pottsville, PA



FESSLER RESIDENCE
Orwigsburg, PA

*T*he combination of Sieboldiana 'Elegans' Hosta and Pachysandra creates a groundcover of complimenting textures and colors beneath a grouping of Sweetgum.

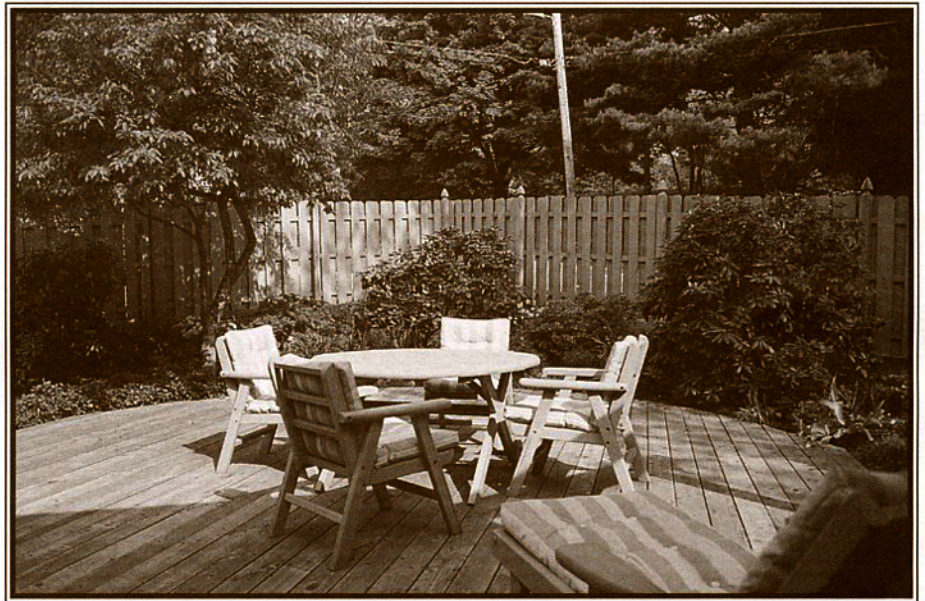
“ Every plant has its fitness and must be placed in its proper surroundings so as to bring out its full beauty. Therein lies the art of landscaping.”

— Jens Jensen

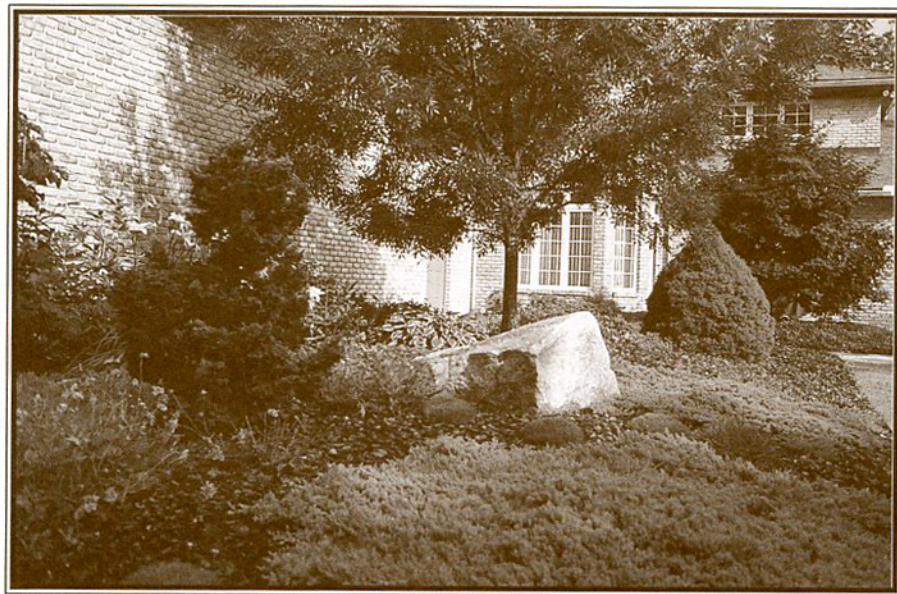
“Where site and structure meet we may well “structure” the site and at the same time “wash” the landscape over and into the structure.”

— Hideo Sasaki

*W*hat used to
be a lawn area with drainage
problems is now a raised,
round redwood deck that
extends directly from the
kitchen door.



REESE RESIDENCE
Schuylkill Haven, PA



MARTZ RESIDENCE
Pottsville, PA

A blending of
height, form, color and
texture was the intent when
the owner requested seasonal
interest to be viewed from
the dining area. Flower color
begins in the spring with the
blooming of crocus and
carries into the fall with the
distinct shades of Autumn
Purple Ash.

“To me, the quest of harmony seems the noblest of human passions. Boundless as is the goal for it is vast enough to embrace everything, it yet remains a very definite one.”

— Le Corbusier

“Thus we seek two values in every landscape: one, the expression of the native quality of the landscape, the other, the development of maximum human livability.”

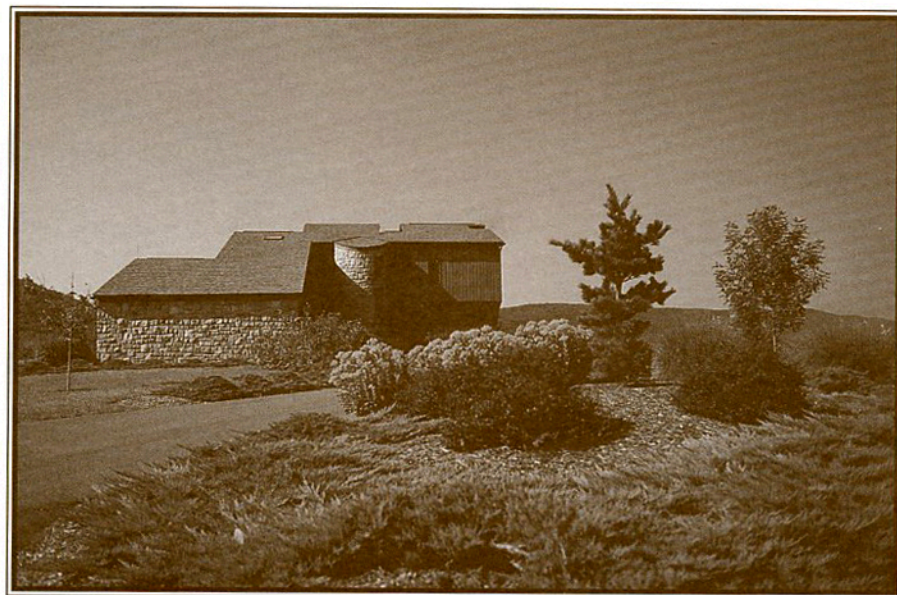
— Garrett Eckbo

A statue of St.

Francis stands at the edge of a curved line of Dwarf Arborvitae, fronted by the soft summer color of Impatiens. A swale and groundwater recharge basin behind this planting are bordered with groupings of Hemlock, Inkberry Holly and perennials — including Sieberian Iris, Turtleheads, Pulmonaria and ferns.



MARTZ RESIDENCE
Pottsville, PA



BORAN RESIDENCE
Pottsville, PA

*F*oreground plantings

along the street help to obscure the view of the parking area in front of the house and accent the lines and textures of the architecture. Plantings include Red Oak, Parviflora Pine, dwarf Barberry, Broadmoor Juniper and Autumn Joy Sedum.

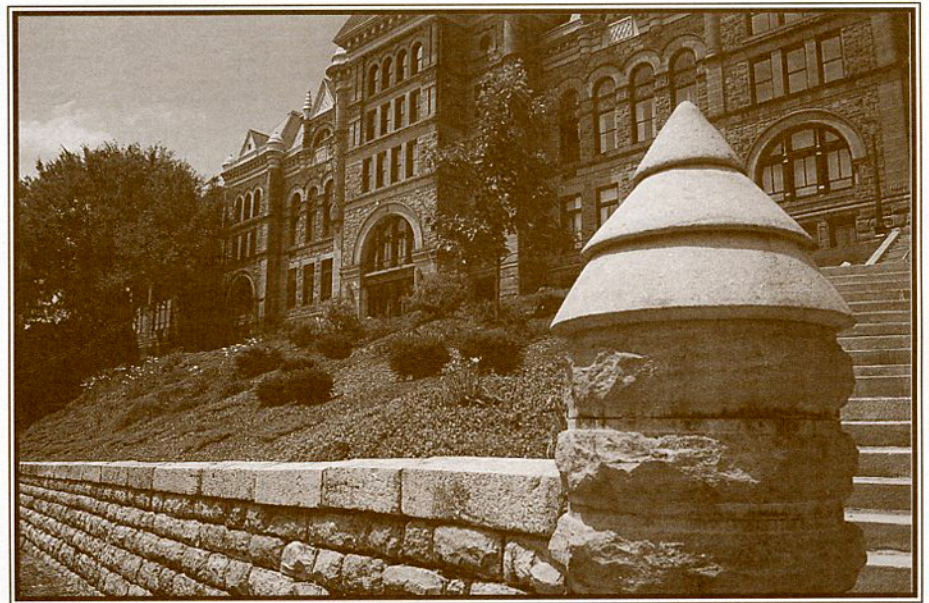
“By their shape, color and foliage texture, plants show that they are intended to enhance architecture, not hide or compete with it. Vines can soften lines, plants can create a base for it, and trees can frame it; for all are, in fact, only part of a larger design concept.”

— Thomas D. Church

“The ultimate principal of landscape architecture is merely the application and adjustment of one system to another, where contrasting subjects are brought into harmonious relationship resulting in a superior unity called “order”.”

— Stanley White

*R*ed Oaks and Arrowwood Viburnums were used as a native foundation in the design for the recently planted steep bank in front of the Courthouse. Rhododendron and Yews replicate the plantings that were in vogue in 1889, the time of the Courthouse construction. Groundcovers, including Cranberry, Cotoneaster, Japanese Garden Juniper, Vinca and daylilies, provide a low maintenance alternative to the previous lawn.



SCHUYLKILL COUNTY COURT HOUSE
Pottsville, PA



HEFFLEGER RESIDENCE
Lake Wynonah, PA

*T*extured, 12 inch
concrete pavers edged with
stone from the site create
an inviting path from the
driveway to the deck over-
looking the lake.

“ Well done is better than well said.”

– Ben Franklin

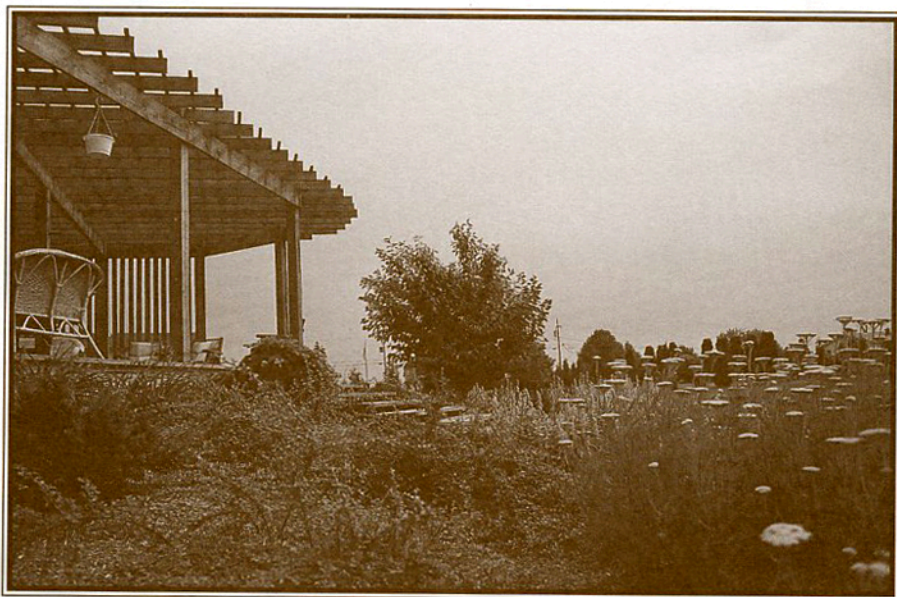
“ We find from experience that the perception of repetition, sequence and balance in landscape composition causes us an immediate pleasure.”

– Henry V. Hubbard

A free-flowing
grass path winds its way
through plantings of
Cranberry Cotoneaster, Red
Meidiland Rose, Japanese
Garden Juniper and perenni-
als – including Sanguineum
Geranium, Siberian Iris,
'Stelle de Oro' Daylily and
'Goblin' Gaillardia.



HEFFLEGER RESIDENCE
Lake Wynonah, PA



HEINLY RESIDENCE
Hamburg, PA

*C*oronation Gold

Yarrow and other full sun
perennials surround this shaded
deck. The shape symbolizes
the baby grand piano that the
owner loves to play.

“Man’s mind once stretched by a new idea never regains its original dimension.”

— Oliver Wendell Holmes

A grouping of Blue Spruce represents the three original owners of this aluminum extrusion company. The red berries of Cranberry Cotoneaster reflect the color of the logo in this fall scene, while annuals such as red Geranium can be displayed beneath the sign during the summer for the same effect. A neat and clean appearance was the goal in this design.

“Trees are much like human beings and enjoy each other's company... trees that like to stand out alone or in small groups become landmarks of their surroundings”

— Jens Jensen



CRESSONA ALUMINUM ENTRANCE
Cressona, PA



FLAIL RESIDENCE
Orwigsburg, PA

*N*ative Dogwoods

add perspective to this landscape planting and act as the intermediate strata between the taller trees, shrubs and groundcover.

“The natural landscape is an indeterminate object; It always contains enough diversity to allow the eye a great liberty in selecting, emphasizing and grouping its elements, and it is furthermore rich in suggestion and in vague emotional stimulus.”

— George Santayana

A grass path leads from the house to a recreation court at the lower end of the property. White Pine, Dogwoods, Rhododendron, ferns and other perennials are planted among the native trees on the site- including Red Oak, Red Maple and Green Ash. This landscape design won the Residential Silver Award for the Excellence in Landscaping Competition sponsored by the Pennsylvania Landscape and Nursery Association.

“To create effectively, the landscape architect must work outdoors to “feel” each rock and stone, the trees and vines, sand and earth, the sky and water, reflecting light and shadow, the mist, the snow and ice, the rain, the wind and the odors and the noises that are all about us.”

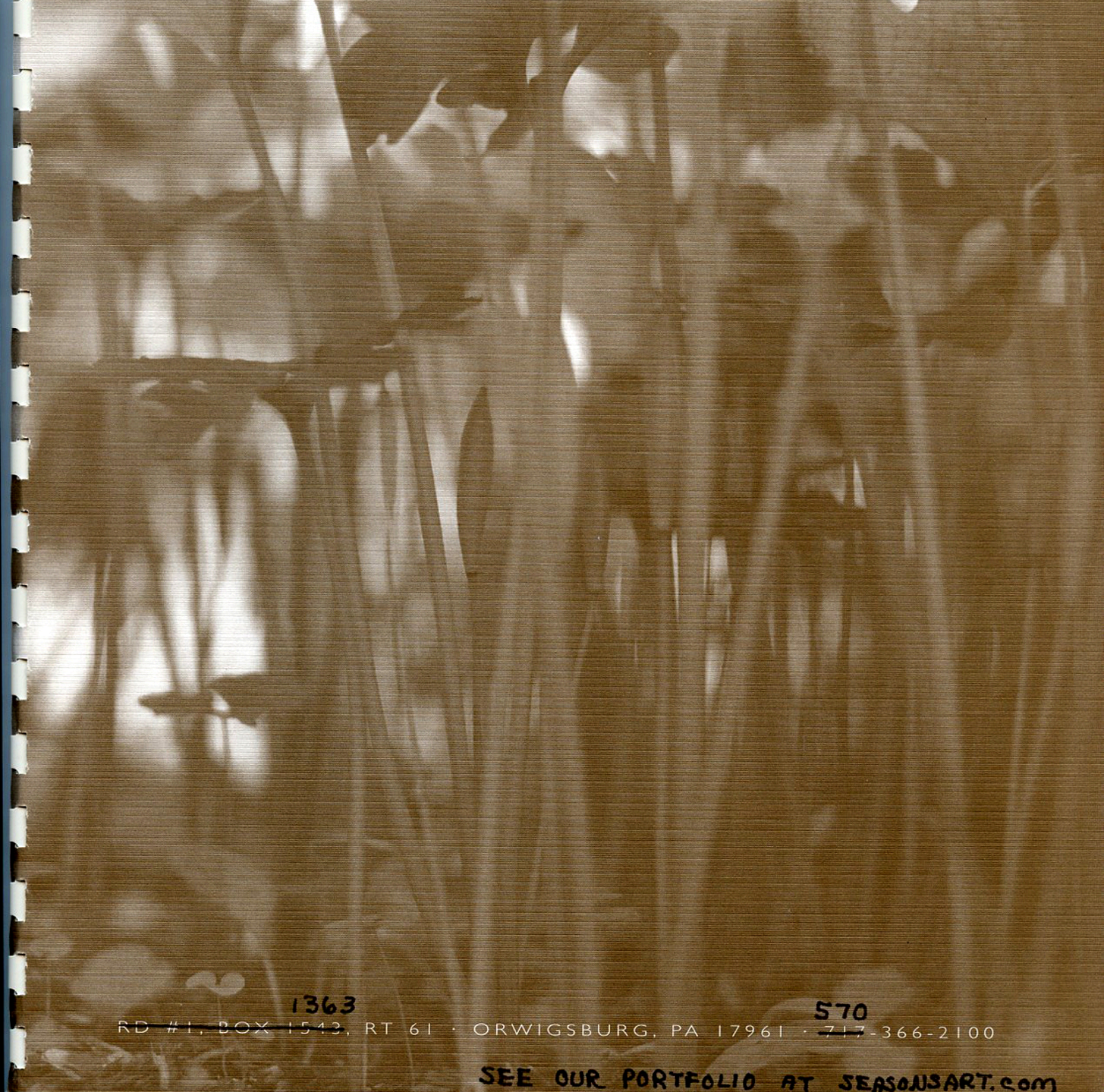
— A.E. Bye



LINARD RESIDENCE
Orwigsburg, PA



*O*ur goal is to provide creative and responsible solutions to the challenges put before us. We look for the opportunity to help our clients achieve their dreams within their means.



1363

570

RD #1, BOX 1543, RT 61 · ORWIGSBURG, PA 17961 · 717-366-2100

SEE OUR PORTFOLIO AT SEASONSART.COM

2 PAVED
AREA 2

ENCLOSED
BASEMENT 0000

2 LAWN 2

